

BX-3G Industrial wireless user manual

www.onbonbx.com

Catalogue

Chapter 1 Operations.....	3
1.1 Application.....	3
1.2 Port Mapping.....	3
1.3 Software setting.....	4
1.3.1 Single&dual color and full color BX-5Q+ series.....	4
1.3.2 Full color YQ series setting.....	6
1.4 Hardware Connection.....	7
Chapter 2 Trouble removal.....	7

Chapter 1 Operations

1.1 Application

The requirements of PC getting into the internet: public net with fixed IP(ask from the local network operator)

The requirements of controller: BX Ethernet port control cards

The requirements of 3G mobile phone card:

BX-3GW industrial wireless router (UMTS/HSDPA/HSUPA 850/1900/2100MHz GSM 850/900/1800/1900MHz)

BX-3GE industrial wireless router (CDMA2000 1x/EVDO Rev.A 800/1900MHz)

The requirements of 5V power supply: Voltage:+5V DC(direct current) input
 Average working current: 650mA@+5V DC
 Maximum instantaneous current: 2.0A@+5V DC

Working temperature: -30°C~70°C

Size: 124mm*100mm (excluding antenna)

1.2 Port Mapping

The operation of PC getting into the public net directly

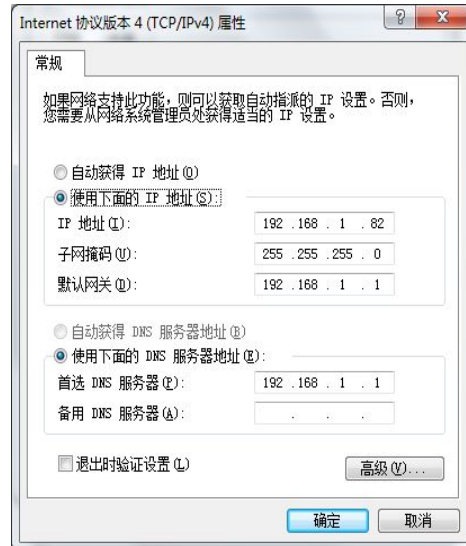
No need to set port, use 8000 port directly

The operation of PC getting into the public net by router

Check the intranet IP infos of your PC, and then change PC IP to fixed intranet IP.



Picture 1



Picture 2

Open browser, input gateway 192.168.1.1 Router default ID:admin
 Passwords:admin (Picture 3)

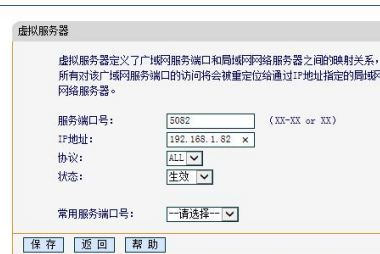


Picture 3

Enter into router, choose “virtual server” on “forwarding rules” (Picture 4), click “add new article”, input internal network IP, and the port which need to do mapping, “status” choose valid, then save (Picture 5).



Picture 4



Picture 5

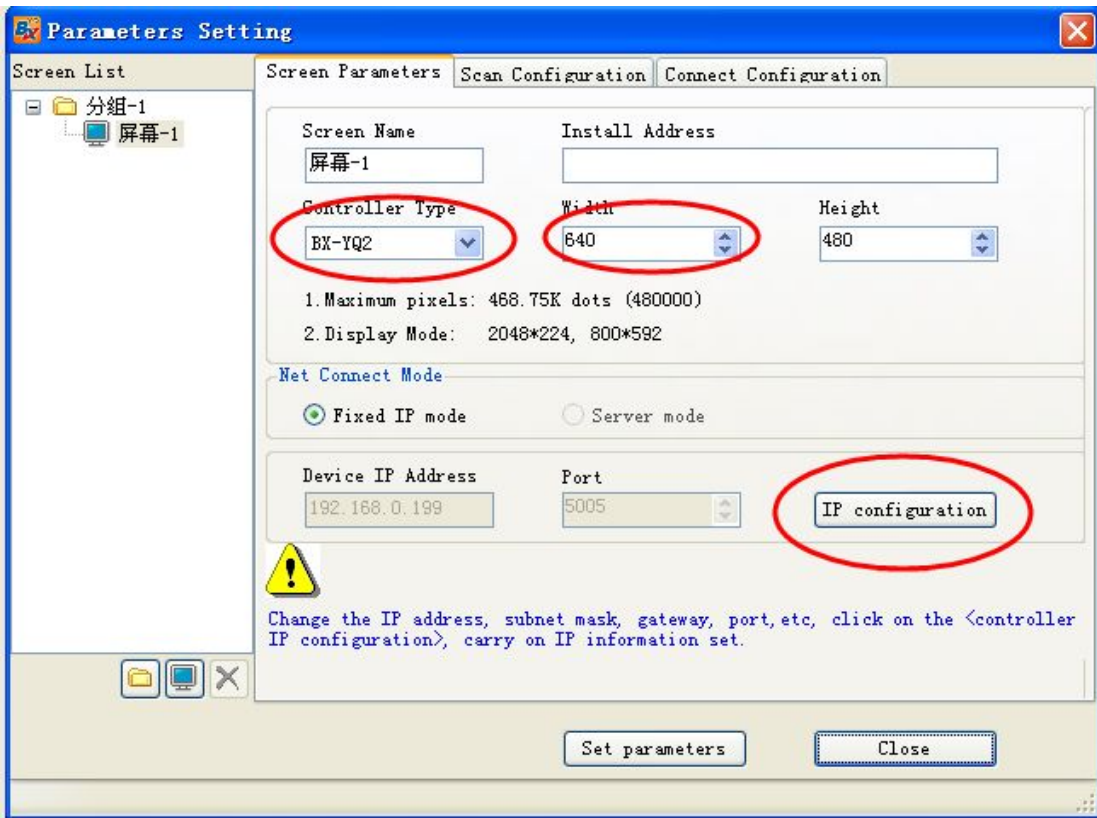
1.3 Software setting

1.3.1 Single&dual color and full color BX-5Q+ series

Connect control card and computer by Ethernet line, and open “LedshowTW 2014” .

Click “setup” -- “set screen parameters”, input “888” .

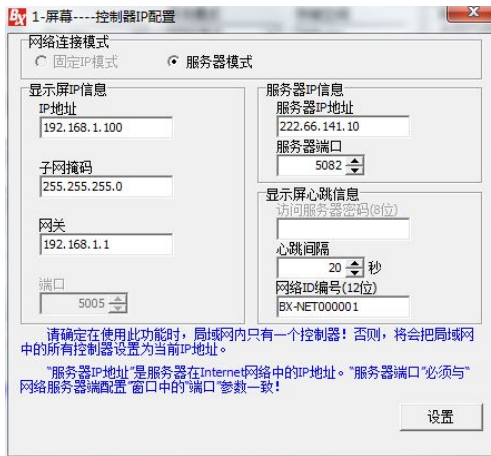
Choose the correct model number in “controller”, -- choose “network communication” in “communication mode”, -- choose “server mode” in “network communication configuration” (Picture 6)



Picture 11

Click “Controller IP configuration”, set “IP address” as 192.168.1.100, -- “subnet mask” as 255.255.255.0, -- “Gateway” as 192.168.1.1; set “server IP address” as public network fixed IP, -- “server port” set according to mapping; Then, click “setup” (Picture7)

Click “network server configuration”, -- click “Local IP”, -- “port” set according to mapping, then, click “start the server” (Picture 8)



Picture 7



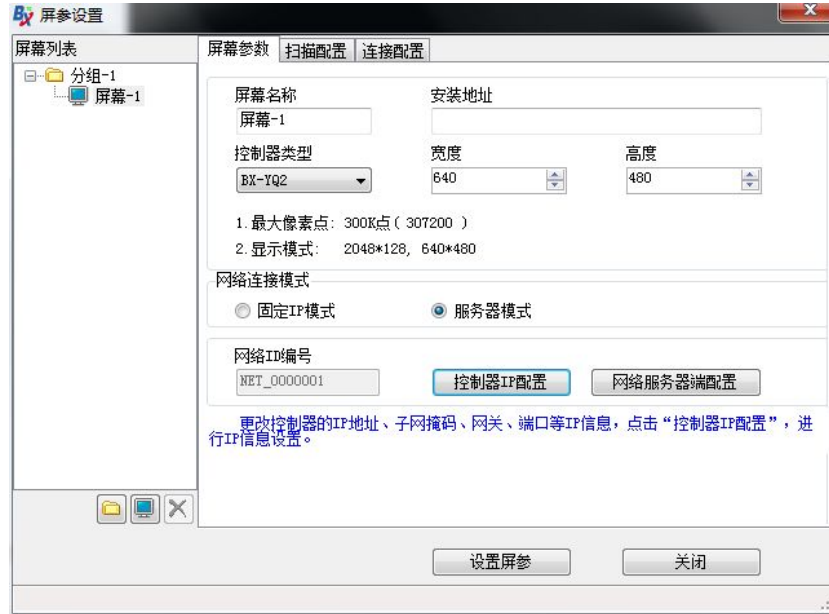
Picture 8

1.3.2 Full color YQ series setting

Connect control card and computer by Ethernet line, and open “LedshowTWYQ 2014” .

Click “setup” -- “set screen parameters”, input “888” .

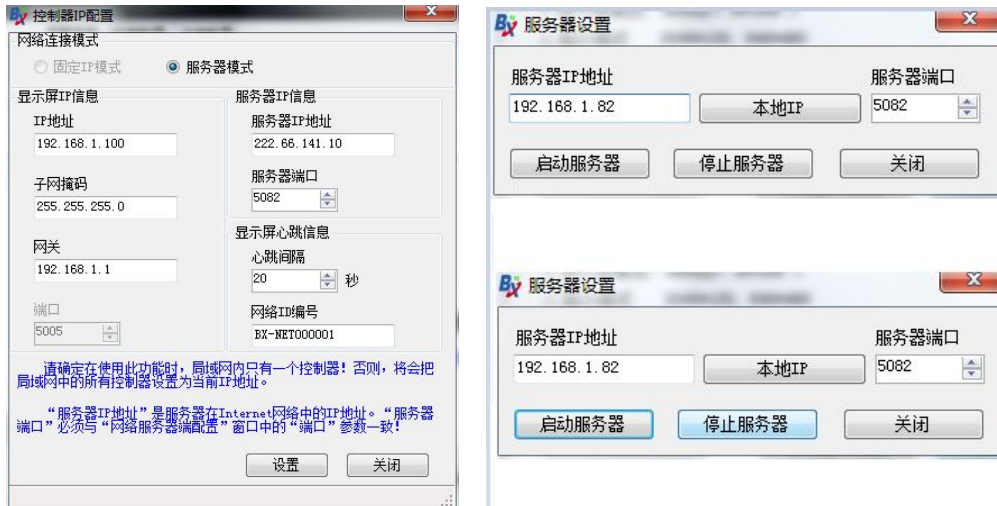
Choose correct model in “controller type”, -- choose “server mode” (Picture 9)



Picture 9

Click “Controller IP configuration”, set “IP address” as 192.168.1.100, -- “subnet mask” as 255.255.255.0, -- “Gateway” as 192.168.1.1; set “server IP address” as public network fixed IP, -- “server port” set according to mapping; Then, click “setup” (Picture 10)

Click “Network Server Configuration”, -- click “obtain IP of this PC”, -- “port” should be the same with mapping port, then click “start server” .



Picture 10

Picture 11

1.4 Hardware Connection

Insert 3G phone card to BX-3G factory wireless router
Connect antenna
Connect BX-3G and controller by Ethernet line
Connect 5V DC power for controller and BX-3G

Chapter 2 Trouble removal

In the application of BX-3G factory wireless router, you may get the prompt that “cannot connect to ledshow software, well, mostly, it’ s the problem of settings on software and hardware connection.

Problem of software setting

Cannot get online, the icon mark does not turn from red color to blue color, Telnet command failed. Virtual server set failed, then, please check the router port mapping is turned on or not, and the mapping port is limited by firewall or not.

Cannot get online, the icon mark does not turn from red color to blue color, telnet command succeed. Please try to close firewall, anti-virus software and some other safe-defend software.

Software online, the icon mark turned to blue color, set parameters failed. It maybe the problem of controller setting and hardware connection, please re set controller IP, and check hardware connection.

Problem of hardware connection

Red color does not light (check your power supply, the connection is correct or not).

Ethernet port indicator does not light(Please check your internet connection, and check you have connected Ethernet line or try to change the Ethernet line).

Yellow light is flashing(like heartbeat), and blue indicator light is always on. The problem is maybe you do not insert 3G phone card correctly. You need to insert 3G phone card first and then, connect power supply.

Yellow light is flashing(like heartbeat), and blue indicator light is flashing fastly. The possibilities: do not connect antenna, weak signal or 3G phone card does not charge. Please check the antenna first; move the place of antenna, and

check the blue indicator light (turn to slow or not); Lastly, check the fee in your phone card.